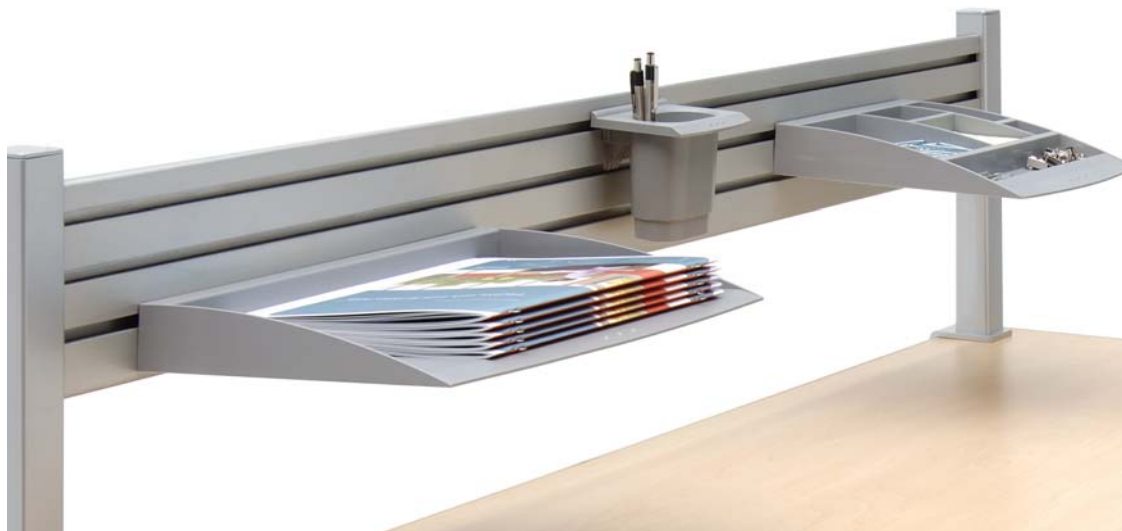


Sierra Tool Bar

Adjustable Height Workcenter Accessories



Position work tools for maximum productivity

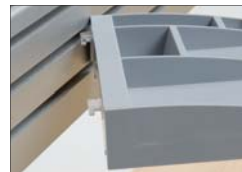
The sleek tool bar and stylish accessories are the next step up in creating a productive, comfortable work environment. Lift everyday work tools off the desktop, freeing up valuable real estate. The Sierra Tool Bar works with virtually all shapes and sizes of our award winning Sierra series of workcenters.



Integrated tool bar clears up work surface.



Keep tools and supplies within easy reach.



Quickly reposition accessories as needs change.



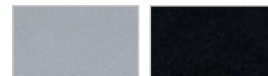
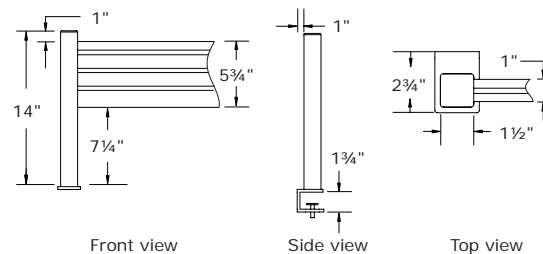
Sierra Tool Bar installs in minutes.

Tool bar accessories

Available in silver or black, see reverse for details



Specifications

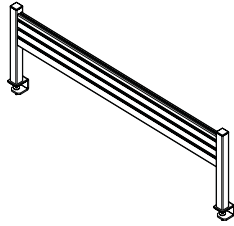


Available Sierra Tool Bar colors:
Sierra Silver (S)
Charcoal (C)

At WorkRite we believe that every body has a right to work comfortably and safely for maximum productivity. You can trust WorkRite - as 75% of Fortune 100 companies have - to create innovative solutions that flex to the diverse range of user needs, preferences and settings at work today.

Sierra Tool Bar

Sierra Tool Bar



- Includes 5¾" extruded tool bar panel with three slots for attaching storage accessories
- Slots are on both sides of tool bar
- SwingArm mounting adaptor available
- Available in Sierra silver or charcoal
- Clamp mounts to worksurfaces from ½" to 1½" thick
- Quickly secure posts to worksurfaces using Allen key provided
- See chart on opposite page to specify correct model number

Model # Finish Weight

970-22-	□	11
970-28-	□	12
970-31-	□	12
970-34-	□	13
970-40-	□	14
970-46-	□	15
970-52-	□	16
970-58-	□	17
970-64-	□	18
970-70-	□	19

Finish: C - Charcoal, S - Sierra Silver

Accessories

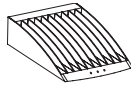
	Color	Model #	Weight
Cup Holder	Black	95212-B	1
	Silver	95212-S	1
5" W x 2" H x 5" L			



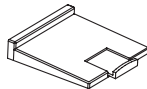
	Color	Model #	Weight
Pen Holder	Black	95204-B	1
	Silver	95204-S	1
4" W x 4" H x 3½" L			



	Color	Model #	Weight
CD Holder	Black	95205-B	1
	Silver	95205-S	1
5½" W x 2" H x 7" L			



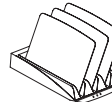
	Color	Model #	Weight
Phone Base	Black	95209-B	1
	Silver	95209-S	1
8½" W x 2" H x 10" L			



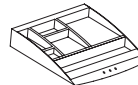
	Color	Model #	Weight
Shelf	Black	95213-B	1
	Black	95214-B	1
18" W x 3¼" H x 7" L			
30" W x 3¼" H x 7" L			



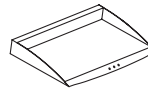
	Color	Model #	Weight
Folder Tray	Black	95210-B	1
	Silver	95210-S	1
7" W x 2½" H x 12½" L			



	Color	Model #	Weight
Accessory Tray	Black	95208-B	1
	Silver	95208-S	1
9½" W x 2" H x 10" L			



	Color	Model #	Weight
Legal Paper Tray	Black	95207-B	1
	Silver	95207-S	1
10½" W x 2" H x 15" L			



Fit Chart	Nominal Width									
	30"	36"	42"	45"	48"	54"	60"	66"	72"	84"
Straight Workcenters*	n/a	970-34 971-34	970-40 971-40	n/a	970-46 971-46	970-52 971-52	970-58 971-58	970-64 971-64	970-70 971-70	n/a
Corner and 120 Degree Workcenters (both 2 and 3 leg)	n/a	970-22 971-22	970-28 971-28	970-31 971-31	970-34 971-34	970-40 971-40	970-46 971-46	970-52 971-52	970-58 971-58	970-70 971-70

Fit chart assumes outer edge of tool bar post is mounted 2½" from outer edge of worksurface

Dimensions	Model #'s									
	970-22 971-22	970-28 971-28	970-31 971-31	970-34 971-34	970-40 971-40	970-46 971-46	970-52 971-52	970-58 971-58	970-64 971-64	970-70 971-70
Actual Dimensions										
On-Center mounting	15½"	21½"	24½"	27½"	33½"	39½"	45½"	51½"	57½"	63½"
End to end	18½"	24½"	27½"	30½"	36½"	42½"	48½"	54½"	60½"	66½"

* excludes Peninsula and P Peninsula worksurfaces

The following are federally registered trademarks of WorkRite Ergonomics:
Stylized I®, WorkRite Sierra™, and WorkRite Ergonomics®.

CS-SETB-062007-01 ©2007

Contents subject to change without notice.

WorkRite Ergonomics, Inc.
1450 Technology Lane, Petaluma · CA 94954
www.workriteergo.com · 800.959.9675