

Sierra Privacy Panel

Adjustable Height Workcenter Accessories

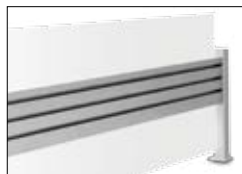


The stylish solution for privacy and productivity

The sleek Privacy Panel with integrated tool bar and stylish accessories are the next step up in creating a productive, comfortable work environment. Lift everyday work tools off the desktop, freeing up valuable real estate. Dual frosted acrylic panels are slightly translucent to provide privacy with a sense of openness.



Integrated tool bar clears up work surface.



Frosted acrylic panels provide 18" of privacy.



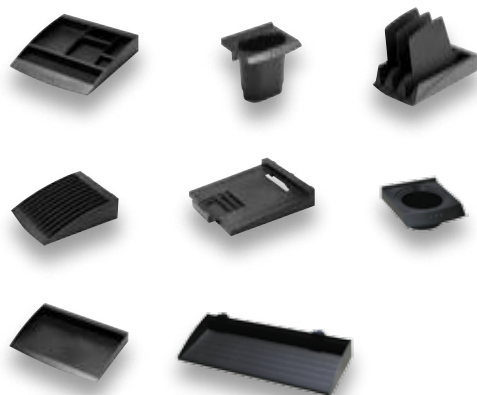
Keep tools and supplies within easy reach.



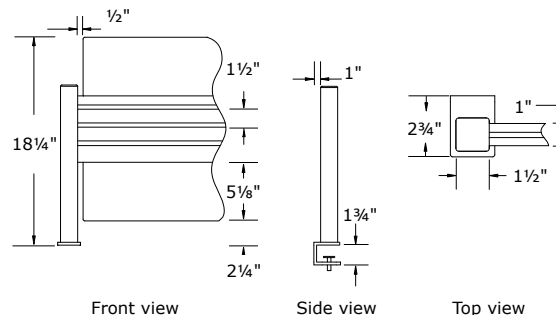
Sierra Privacy Panel installs in minutes.

Tool bar accessories

Available in silver or black, see reverse for details



Specifications

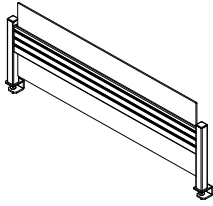


Available Sierra Tool Bar colors:
Sierra Silver (S)
Charcoal (C)

At WorkRite we believe that every body has a right to work comfortably and safely for maximum productivity. You can trust WorkRite - as 75% of Fortune 100 companies have - to create innovative solutions that flex to the diverse range of user needs, preferences and settings at work today.

Sierra Privacy Panel

Sierra Privacy Panel



- Includes 5¾" extruded tool bar panel with three slots for attaching storage accessories
- Slots are on both sides of tool bar
- Ships with frosted acrylic panels mounted above and beneath tool bar
- SwingArm mounting adaptor available
- Available in Sierra silver or charcoal
- Clamp mounts to worksurfaces from ½" to 1½" thick
- Quickly secure posts to worksurfaces using Allen key provided
- See chart below to specify model number

Model # Finish Weight

971-22-	□	13
971-28-	□	14
971-31-	□	15
971-34-	□	16
971-40-	□	18
971-46-	□	19
971-52-	□	21
971-58-	□	23
971-64-	□	25
971-70-	□	26

Finish: C - Charcoal, S - Sierra Silver

Accessories

Cup Holder



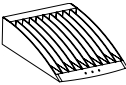
Color	Model #	Weight
Black	95212-B	1
Silver	95212-S	1
5" W x 2" H x 5" L		

Pen Holder



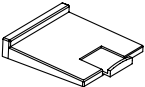
Color	Model #	Weight
Black	95204-B	1
Silver	95204-S	1
4" W x 4" H x 3½" L		

CD Holder



Color	Model #	Weight
Black	95205-B	1
Silver	95205-S	1
5½" W x 2" H x 7" L		

Phone Base



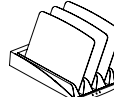
Color	Model #	Weight
Black	95209-B	1
Silver	95209-S	1
8½" W x 2" H x 10" L		

Shelf



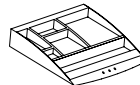
Color	Model #	Weight
Black	95213-B	1
Black	95214-B	1
18" W x 3¼" H x 7" L		
30" W x 3¼" H x 7" L		

Folder Tray



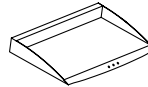
Color	Model #	Weight
Black	95210-B	1
Silver	95210-S	1
7" W x 2½" H x 12½" L		

Accessory Tray



Color	Model #	Weight
Black	95208-B	1
Silver	95208-S	1
9½" W x 2" H x 10" L		

Legal Paper Tray



Color	Model #	Weight
Black	95207-B	1
Silver	95207-S	1
10½" W x 2" H x 15" L		

Fit Chart

	Nominal Width									
	30"	36"	42"	45"	48"	54"	60"	66"	72"	84"
Straight Workcenters*	n/a	970-34 971-34	970-40 971-40	n/a	970-46 971-46	970-52 971-52	970-58 971-58	970-64 971-64	970-70 971-70	n/a
Corner and 120 Degree Workcenters (both 2 and 3 leg)	n/a	970-22 971-22	970-28 971-28	970-31 971-31	970-34 971-34	970-40 971-40	970-46 971-46	970-52 971-52	970-58 971-58	970-70 971-70

Fit chart assumes outer edge of tool bar post is mounted 2½" from outer edge of worksurface

Dimensions

	Model #'s									
	970-22 971-22	970-28 971-28	970-31 971-31	970-34 971-34	970-40 971-40	970-46 971-46	970-52 971-52	970-58 971-58	970-64 971-64	970-70 971-70
Actual Dimensions										
On-Center mounting	15½"	21½"	24½"	27½"	33½"	39½"	45½"	51½"	57½"	63½"
End to end	18½"	24½"	27½"	30½"	36½"	42½"	48½"	54½"	60½"	66½"

* excludes Peninsula and P Peninsula worksurfaces

The following are federally registered trademarks of WorkRite Ergonomics:
Stylized I®, WorkRite Sierra™, and WorkRite Ergonomics®.

CS-SEPP-062007-01 ©2007

Contents subject to change without notice.

WorkRite Ergonomics, Inc.
1450 Technology Lane, Petaluma · CA 94954
www.workriteergo.com · 800.959.9675